



# SOCIAL SECURITY: WITH YOU THROUGH LIFE'S JOURNEY...



Securing today  
and tomorrow





# WHAT IS SSI AND HOW TO APPLY



# SUPPLEMENTAL SECURITY INCOME (SSI)

Supplemental Security Income (SSI) is a federal program that provides monthly payments to people who have limited income and few resources.

SSI is for people who are:

- 65 or older,
- as well as for those of any age, including children, who are blind or who have disabilities.

To get SSI, you must meet one of these requirements:

- Be age 65 or older.
- Be totally or partially blind.
- Have a medical condition that keeps you from working and is expected to last at least one year or result in death.
  - For children, a medical condition or a combination of conditions that result in “marked and severe functional limitations” which very seriously limit the child’s activities for at least one year or result in death.

To apply for SSI, you must:

- complete an Application for SSI
- complete additional forms if you are applying for SSI because you are blind or disabled, regardless of age

# MORE INFORMATION AND HOW TO CONTACT THE SOCIAL SECURITY ADMINISTRATION

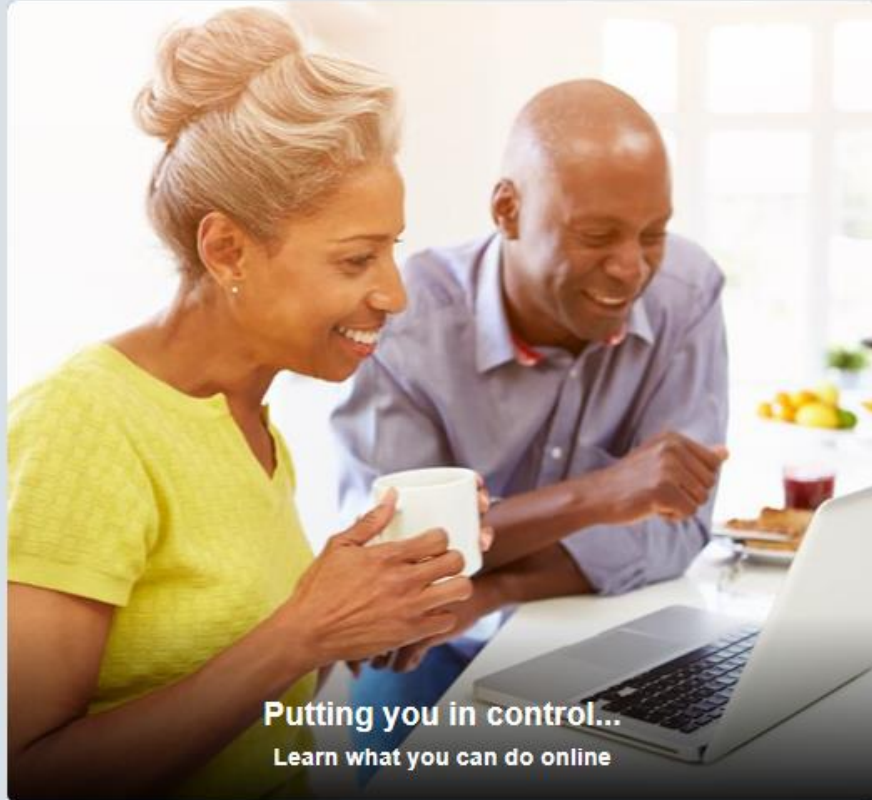
For more information, please review:

- SSI Spotlights – [www.ssa.gov/ssi/links-to-spotlights.htm](http://www.ssa.gov/ssi/links-to-spotlights.htm)
- Supplemental Security Income (05-11000, ICN 480200) [www.ssa.gov/pubs/EN-05-11000.pdf](http://www.ssa.gov/pubs/EN-05-11000.pdf)
- You May be Able to Get Supplemental Security Income (05-11069, ICN 480390) [www.ssa.gov/pubs/EN-05-11069.pdf](http://www.ssa.gov/pubs/EN-05-11069.pdf)
- Understanding Supplemental Security Income (17-008, ICN 443175) [www.ssa.gov/pubs/EN-17-008.pdf](http://www.ssa.gov/pubs/EN-17-008.pdf)
- Benefits for Children With Disabilities (05-10026, ICN 455360) [www.ssa.gov/pubs/EN-05-10026.pdf](http://www.ssa.gov/pubs/EN-05-10026.pdf)
- What You Need to Know About Supplemental Security Income When You Turn 18 (05-11005, ICN 480260) [www.ssa.gov/pubs/EN-05-11005.pdf](http://www.ssa.gov/pubs/EN-05-11005.pdf)
- What you Need to Know When You Get Supplemental Security Income (05-11011, ICN 480265) [www.ssa.gov/pubs/EN-05-11011.pdf](http://www.ssa.gov/pubs/EN-05-11011.pdf)

For more information about SSI, you may:

- call the Social Security Administration at 1 (800) 772-1213 or 1 (800) 325-0778 TTY
- visit [www.ssa.gov/ssi](http://www.ssa.gov/ssi)
- contact your local Social Security office, using our Field Office Locator at [www.ssa.gov/locator](http://www.ssa.gov/locator)

If you are helping someone who has a critical case or is in dire need, and you have not been able to contact his or her local Social Security office, you or your staff may contact the Regional Communications Director (RCD) for assistance. The list of RCDs is available online at [www.ssa.gov/agency/rcds.html](http://www.ssa.gov/agency/rcds.html).



Putting you in control...  
Learn what you can do online



Retirement



Disability



Employers:  
File W-2s online



Get to know  
your Social Security



my Social Security

Check out your *Social Security Statement*, change your address & manage your benefits online today.



Social Security Number

Your Social Security number remains your first and continuous link with Social Security.



Retirement Estimator

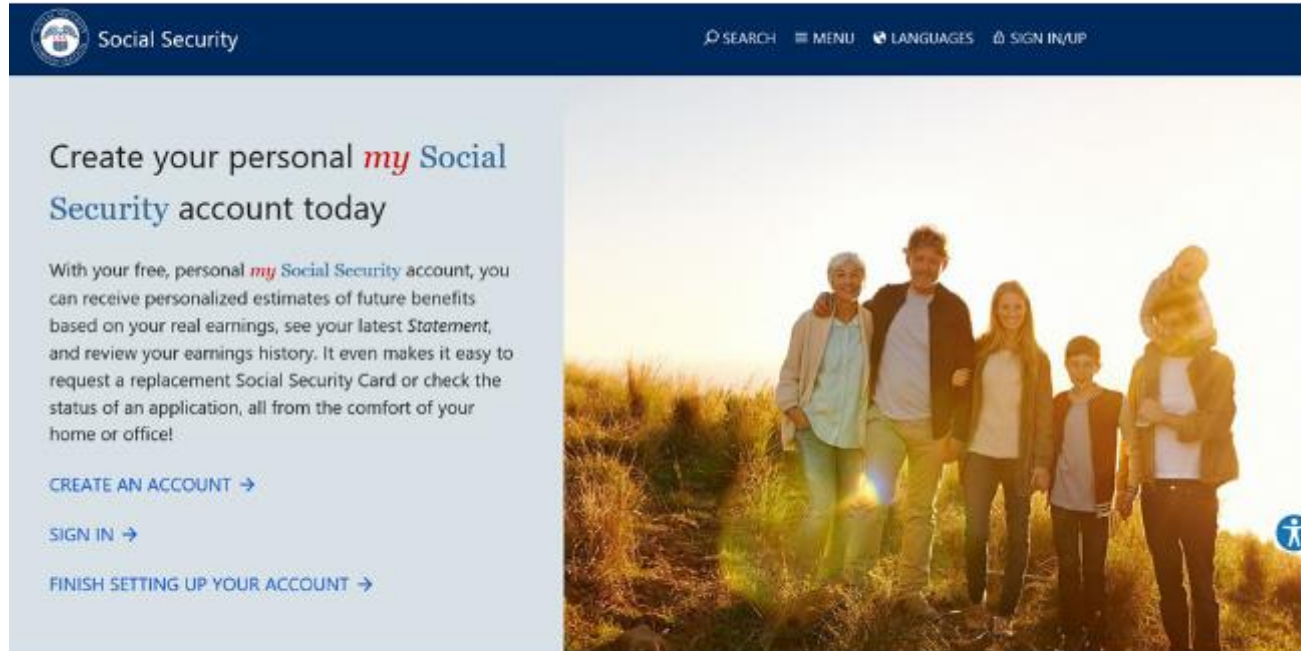
Calculate your benefits based on your actual Social Security earnings record.



FAQs

Get answers to frequently asked questions about Social Security.

# MY SOCIAL SECURITY



The screenshot shows the desktop version of the Social Security website. At the top, there is a dark blue navigation bar with the Social Security logo on the left and links for SEARCH, MENU, LANGUAGES, and SIGN IN/UP on the right. Below the navigation bar, the main content area is split into two columns. The left column has a light blue background and contains the heading "Create your personal *my* Social Security account today". Below this heading is a paragraph of text describing the benefits of a *my* Social Security account, followed by three links: "CREATE AN ACCOUNT →", "SIGN IN →", and "FINISH SETTING UP YOUR ACCOUNT →". The right column features a large photograph of a diverse family of six people (two adults and four children) walking through a field of tall grass at sunset. A small accessibility icon is visible in the bottom right corner of the photo.

[ssa.gov/myaccount](https://ssa.gov/myaccount)



The screenshot shows the mobile app interface for Social Security. At the top, there is a dark blue header with the Social Security logo on the left and icons for search, menu, globe, and lock on the right. Below the header, the main content area has a dark blue background with white text. The text reads: "Set yourself free. Open a *my* Social Security account today and rest easy knowing that you're in control of your future." Below this text is a teal button with white text that says "Sign In or Create an Account". Below the button is a white box with a dark blue border containing the text: "Posted June 10, 2017: An Important Message for *my* Social Security Users: Please read this important notice about changes to your account." Below the white box is a white box with a dark blue border containing the text: "HAVE AN ACTIVATION CODE?" Below this text is a teal button with white text that says "Finish Setting Up Your Account".

# MY SOCIAL SECURITY SERVICES

If you do not receive benefits, you can:

- View retirement benefit estimates at different ages or dates when you want to start receiving benefits;
- View possible spouse's benefits;
- Request a replacement Social Security card if you meet certain requirements;
- Check the status of your application or appeal;
- Get a benefit verification letter as proof that you are not getting benefits;
- Get your *Social Security Statement* to review:
  - Estimates of your future retirement, disability, and survivor benefits;
  - Your earnings **record**, to verify the amounts that we posted are correct; and
  - The estimated Social Security and Medicare taxes you've paid.

**[ssa.gov/myaccount/what.html](https://ssa.gov/myaccount/what.html)**

# *MY* SOCIAL SECURITY SERVICES

If you receive benefits or have Medicare, you can:

- Opt out of mailed notices for those available online;
- Request a replacement Social Security card if you meet certain requirements;
- Report your wages if you work and receive Disability Insurance (SSDI) and/or Supplemental Security Income (SSI) benefits;
- Get a benefit verification letter as proof that you are getting benefits;
- Check your benefit and payment information and your earnings record;
- Change your address and phone number;
- Start or change direct deposit of your benefit payment;
- Submit your advance designation of representative payee request;
- Request a replacement Medicare card; and
- Get a replacement SSA-1099 or SSA-1042S for tax season.

**[ssa.gov/myaccount/what.html](https://ssa.gov/myaccount/what.html)**





# *MY* SOCIAL SECURITY

You can assist someone in creating a *my* Social Security account if they:

- are with you;
- have their own email address; and
- can answer the “out of wallet” questions

You cannot create a *my* Social Security account on behalf of another person by using another person's information or identity, even if you have that person's written permission.

For example, you cannot create an account for another person:

- with whom you have a business relationship;
- for whom you are a representative payee; or
- for whom you are an appointed representative.



**FOLLOW US ON SOCIAL MEDIA!**



**@SocialSecurity**

# QUESTIONS?





# SOCIAL SECURITY: WITH YOU THROUGH LIFE'S JOURNEY...



Securing today  
and tomorrow

